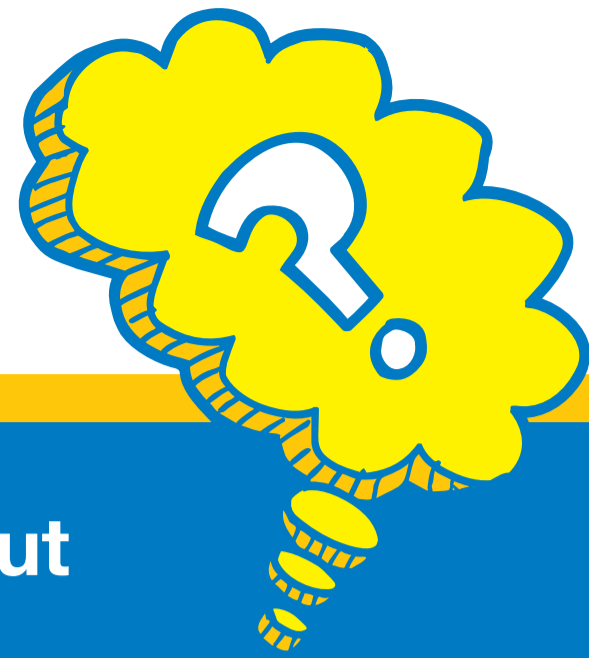


The changing landscape of autism in North Yorkshire



We asked you 'what do you think about the draft autism strategy?'

You told us

We did

The key themes / priorities should be more specific



Amended the theme titles to reflect discussion

The draft strategy was too long



Produced a shorter version in collaboration with individuals with autism – 'The Changing Landscape of Autism in North Yorkshire' Made simple.

Visuals and input are important to you



Included illustrations depicting autism drawn by individuals with autism

Families require more support



Added 'Support for people with autism and their families' as a key theme / priority

Increased support and continuity is needed for transition



Added "Supporting people with autism through key life changes" as a theme

There needs to be an increased understanding of autism across all services



The North Yorkshire autism strategy has a range of targets to increase understanding of autism'

Enhanced links are needed between diagnostic services and schools



Undertaken a quality review to ascertain where the gaps are to ensure that links can be strengthened.

There needs to be more collaboration between the Police and District Councils



Both Police and District Councils have endorsed the strategy and will contribute to the implementation plan

Early intervention is needed for families approaching crisis



Developed a new Prevention Service

Parents want help to find the right interventions for their child



Agreed to develop a letter explaining local services to those that receive a diagnosis of autism.